

Installation Manual for GRR/Guardrail Receiver System



Thank you for using our Guardrail Receiver Post System. If there are any additional questions regarding the installation of, maintenance, or use of this product; please contact your local authorized reseller. For nonstandard installation issues, please contact your foreman or site superintendent for a review of use and engineering requirements.

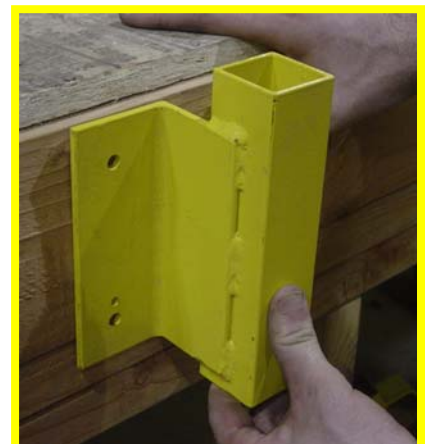
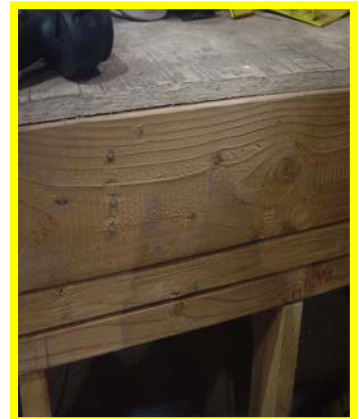
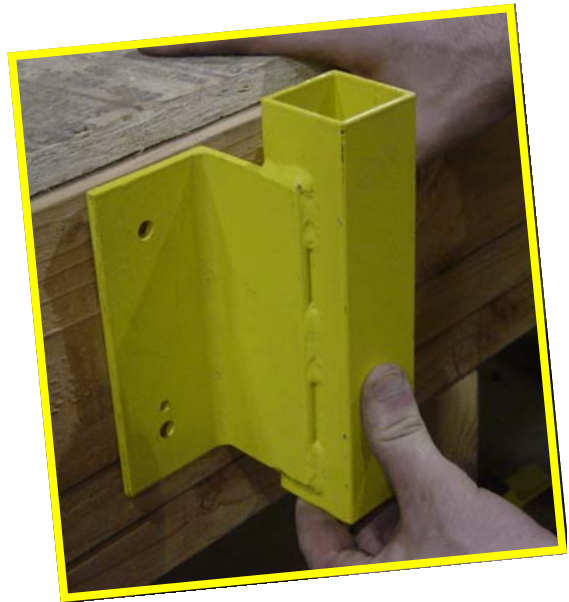
Guardrail Receiver Installation Instructions

Before installing the GRR...

Guardrail System, please ensure that the proposed site is clean, debris-free, and devoid of any damage which would compromise the strength of the receiver. Please consult with a Foreman or Superintendent if there are any questions regarding what constitutes a safe work area.

Now that you have...

a clean work area, space out your receivers according to the safety requirements specific to your local area or company. Attach the receivers using $\frac{1}{4}$ " x 2" lag bolts.



With the ...

receiver(s) installed, you can now insert the guardrail post. Rotate before inserting so that the rail loops are pointing out and away from the traffic area being protected.



With the posts installed, now ...

you can run the rails through the loops on the outside face of the post. If using steel snap-on rails, always double check to ensure that the "snap" has fully engaged and locked into place. If using 2x4 rails, allow for a minimum of 12" of overlap and consider screwing or nailing the ends together to prevent weak spots.



Congratulations!!!...you have installed...

a GRR guardrail system which will help you and your co-workers feel safer while they concentrate on doing their jobs. To disassemble and re-use this system, simply pull down rails, remove posts, then back out lags and take down receiver plates. Always inspect parts for damage and excessive wear before storing or re-using. For any out-of-the-box installation questions, contact your Foreman or site Superintendent.



Guardian Fall Protection, Inc.
800-466-6385
26513 79th Ave. S.
Kent, WA 98032
www.guardianfall.com